

**BP 994**

# **ASTRO TRAVEL COT**



**BEFORE ASSEMBLING THIS COT READ AND UNDERSTAND THE INSTRUCTIONS. INCORRECT ASSEMBLY MAY MAKE THE COT UNSAFE.**

**DO NOT USE THIS COT IF ANY PART IS BROKEN, TORN OR MISSING. KEEP THESE INSTRUCTIONS IN A SAFE PLACE FOR FUTURE REFERENCE.**

**WARNING- RECOMMENDED MATTRESS SIZE**

690 mm Wide x 1040 mm Long x No more than 20 mm Thick

Using the wrong size mattress may create hazardous gaps that could result in suffocation or could reduce the side height of the cot which may result in your child falling out from the cot.

**DO NOT ADD AN EXTRA MATTRESS AS THIS MAY CAUSE SUFFOCATION**

## **WARNING**

- Never leave children unattended.
- Do not leave anything in the cot such as toys that provide a foothold to enable the child to climb out of the cot.
- Do not use the cot near naked heat sources, bar heaters, open fires, or exposed flames.
- Keep the cot clear of trailing cables and hanging cords.
- Keep medication, and small items that a child could choke on away from the cot.
- To prevent falls the bassinet (if supplied) should not be used once a child can sit up.
- This cot is designed for use with children who cannot climb out of the cot, weigh less than 14 kg, and who are less than 86 cm tall.
- The maximum weight of the child to be placed on the change table (if supplied) must not exceed 9kg.
- The bassinet (if supplied) is designed for use with children who cannot sit up unaided and are not heavier than 9 kg.
- Do not place more than one child in the cot or bassinet at the same time.
- Keep your fingers clear from corner joints and any moving parts when opening or folding the cot.

## **CARE AND MAINTENANCE**

- Always store cot indoors in a clean dry place.
- Check regularly for loose, damaged or broken parts, these should be tightened if loose and replaced if damaged or broken.
- Spot Clean fabrics with a mild soap and cold water and allow to dry before storage or use.
- Removable covers maybe hand washed or spot cleaned. wash separately. Do not bleach. Do not dry clean. Do not tumble dry.
- Dry in the shade thoroughly before storage or use and avoid direct heat and exposure to sunlight.

## **GUARANTEE**

This product carries a twelve month guarantee to rectify manufacturing defects. It does not cover problems arising from accidental damage or product misuse.

## Parts



Portacot frame



Mattress



Handbag



Changer



Change table  
tube with plastic



Bassinet



Bassinet support  
tubes(2 sets)

---

## INSTRUCTIONS FOR ASSEMBLY AND LOCKING PROCEDURES

- 1) Unzip then remove carry bag and mattress base by unfastening the Velcro straps. Remove the travel cot.
- 2) Widen the four legs.
- 3) Ensure the base is completely lifted, then starting with the shorter sides, pull up each rail to lock in place. Then pull upwards the long rail joint until they lock into place.
- 4) Push the centre base down until it lays flat.
- 5) Put the mattress base into the travel cot and fix the Velcro cot fasteners under the mattress onto the travel cot base.

### **WARNING:**

BEFORE EACH USE MAKE SURE THAT THE COT IS CORRECTLY ASSEMBLED AND THAT THE LOCKING DEVICE(S) IS FULLY ENGAGED

---

## To Open the Cot

Remove the cot from the carry bag. Release the velcro™ tabs on the mattress and set it aside



Separate the four corner posts enough to be able to grip the centre joints of the side and end rails.



Lift the side and end rails up sharply until they are firmly locked in place. Please check and ensure that the top rails are fully locked before use.



Push down on the centre of the cot base, until the cot is fully opened and locked in position. Lift the flap covering the locking mechanism by releasing the velcro™ fastener, lift the handle of the locking mechanism to ensure that the cot has locked. When locked, the button in the centre should pop up, and its top surface should be slightly above the lock surface. Ensure that the cot is stable.



Locking mechanism  
in locked position

Position the flap over the lock and fasten it with the velcro™ fastener.  
Place the mattress in the cot with the padded side on top.



Thread the velcro™ tabs attached to the mattress, through the slits in the base of the cot and secure to the underside of the cot to hold the mattress firmly in place.



## If wheels are supplied.

Before placing your child in the cot, apply the brakes and ensure that the wheels are locked.

## TO INSTALL BASSINET (Where Applicable)

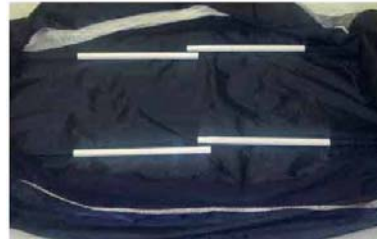
Remove the mattress from the portable cot and put it aside.

Lift the bassinet into the top of the cot and attach the four plastic anchor moldings to the lower edges of the cot corner moldings.



Select from the metal tubes provided, two that have their ends reduced. Place the tubes into the sewn pockets with the reduced ends towards the centre of the bassinet.

Place the remaining tubes into the opposite pockets with the ends that have a small hole facing the centre of the bassinet.



Align the spring loaded button with the hole in the opposite tube.

Slide the ends of the tubes together so that one is inserted inside the other. Ensure that the spring loaded button locates correctly into the hole to hold the joined tubes together.

Place the mattress into the bassinet with its padded side on top, press down firmly to ensure a snug fit.

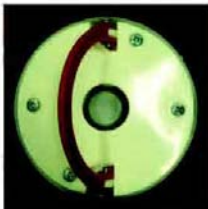


## TO REMOVE THE BASSINET

Remove the mattress from the bassinet. Release the plastic anchor moldings from the cot corner moldings and lift the bassinet from the cot. Depress the spring loaded buttons holding the mattress support tubes together and separate the tubes and remove them from the sewn pockets.

## TO FOLD THE PORTABLE COT

Remove the mattress and set it aside.  
Lift the flap of the locking mechanism by releasing the velcro™ fastener.  
Push the button located in the centre of the locking mechanism down.  
Lift the handle of the locking mechanism up as high as possible.



Locking mechanism in unlocked position button depressed

Locate the release buttons in the centre of each side and end rail. Squeeze the buttons upwards on the side rails and lower the rails, repeat for the end rails.

NOTE: The buttons are located beneath the fabric covering the rails and the centre of the base must remain in a high position to allow the buttons to operate freely.

Do not force the rails downward. If a button does not release then lift the base and repeat the procedure.



Pull the cot legs in together, to make a compact bundle.



Take the mattress and wrap it around the cot. Feed the velcro™ tabs through the plastic buckles and secure the tabs. Slide the cot into its carry bag and close the zipper. Be sure to check that the carry strap comes through the opening in the bag.



## TO INSTALL CHANGE TABLE (If Supplied)



Insert the change table tube to the change table fabric



Insert the tube to another until the button springs out.



Put the change table on the travel cot and make the hook seize up the rail



Zip on the change table to the travel cot



Travel cot with Changer attached

## TO ATTACH CANOPY WITH INSECT NET (If Supplied)

Fit the mounting clamps onto the top rail of the frame away from the centre lock on both sides.

Fit the elasticized rear flap around the cot sides and end.

Similarly, fit the front elasticized netting around the cot sides and end.

## TO ATTACH TOY BAR (If Supplied)

Fit the toy bar onto the side rails of the frame and press the locking lever / mounting clamps firmly down to secure the toy bar in place.

To remove the toy bar, release the locking levers / mounting clamps and lift the toy bar from the frame.

# love<sup>n</sup>care™

Contact Us:

Love N Care Pty Ltd.

297-299 Canterbury Rd, Revesby

NSW 2212 Australia

Contact No: 02 9774 4655

Fax: 02 9774 4633

Email: [info@lovencare.com.au](mailto:info@lovencare.com.au)

Website: [www.lovencare.com.au](http://www.lovencare.com.au)